


**Doctoral Training Centre  
of the KIC EIT ICT Lab**

***Qu'est-ce que c'est que cela ?  
On va y aller progressivement***

***EIT / KIC ?***

- 2) KIC EIT ICT Lab ?***
- 3) Innovation ?***
- 4) Doctoral School Program***

Doctoral School and DTC presentation | Page 2



# 1) EIT European Institute of Innovation & Technology

**MISSION:**  
To become the catalyst for a step change in the European Union's innovation capacity and impact

EIT to unlock the European innovation landscape

The EIT is an integral part of  
THE FRAMEWORK PROGRAMME FOR RESEARCH AND INNOVATION  
**HORIZON 2020**

Higher Education, Research & Technology, Business

EIT is the first initiative of the EU bringing together the 3 corners of the knowledge triangle by establishing **a new type of partnership between leading companies, research centres, and universities in Europe**

Doctoral School and DTC presentation | Page 3



# 2) EIT ICT EIT where thematic areas are in ICT



Health & Well-being

Internet Technologies & Architecture

Smart Energy Systems

Digital Cities of the Future

Privacy, Security Trust

Intelligent Mobility and Transport Systems

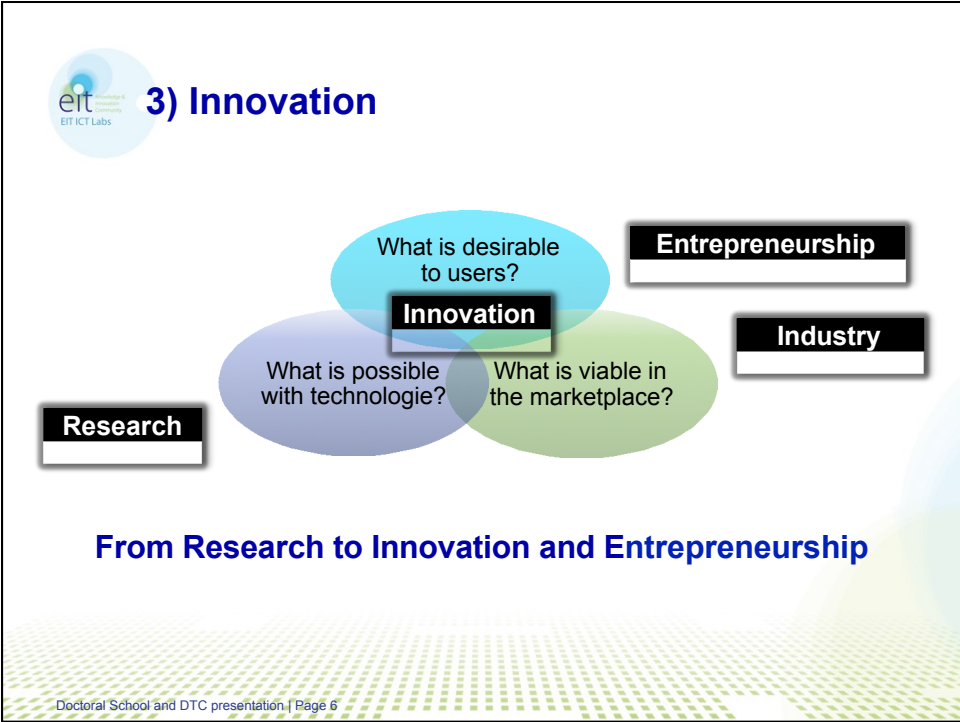
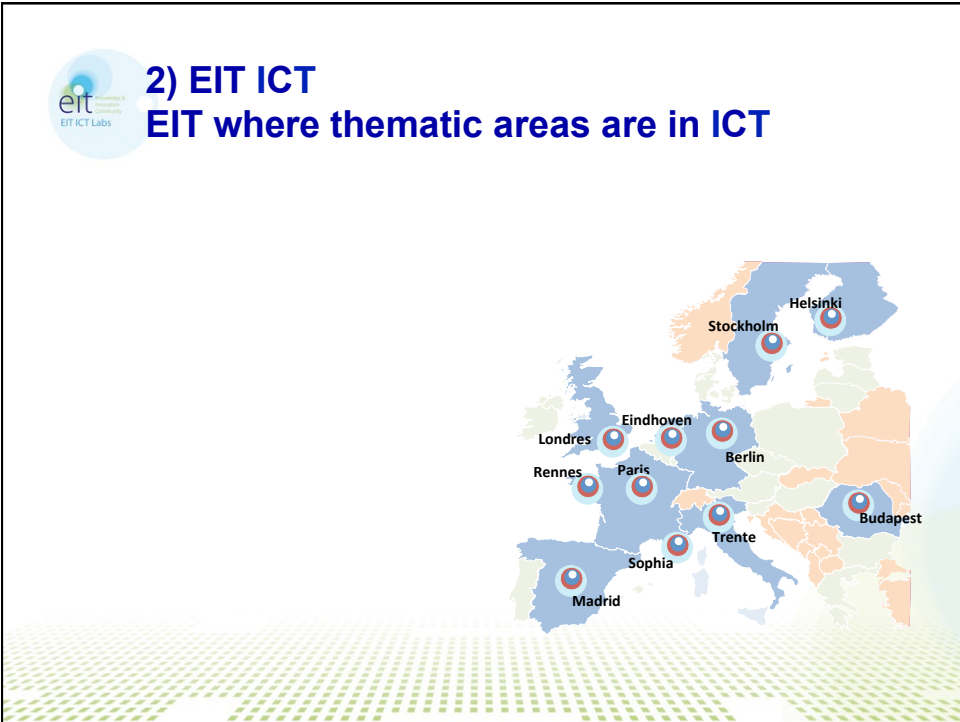
Networking Solutions for Future Media

Computing in the Cloud

Smart Spaces

Cyber-Physical Systems

Doctoral School and DTC presentation | Page 4





 **4) Doctoral School in ICT Innovation**

- You are in a **PhD thesis** (ANR, Cifre, etc.)
- You've started your PhD in **2014 or end of 2013**
- Your topic has to do with the **EIT ICT Labs thematic areas**
- You would like to make the bridge with **Innovation** (what new products, services, cool stuff,... could derive from Research?) and **Industry**
- You would like to **network in Europe...**



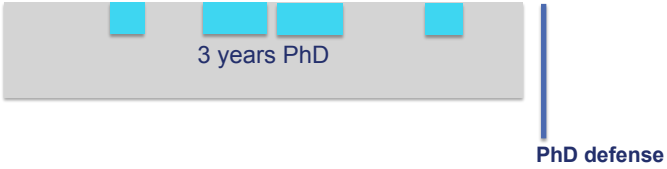
Doctoral School and DTC presentation | Page 7

 **Learn how to go from science and technology to innovation**



**Innovation & entrepreneurship learning**

- Opportunity Recog. (1 wk)
- Business Devpt (on 15 wks)
- Grow & Harvest (1-2 wks)



3 years PhD

PhD defense

Doctoral School and DTC presentation | Page 8



## Get an international and cross-organizational perspective

**Innovation & entrepreneurship learning**


- Opportunity Recog. (1 wk)
- Business Devpt (on 15 wks)
- Grow & Harvest (1-2 wks)

3 years PhD

**International Mobility**  
(minimum of 6 months)

PhD defense

Doctoral School and DTC presentation | Page 9



## Explore the Innovation potential of your research work

**Innovation & entrepreneurship learning**

- Opportunity Recog. (1 wk)
- Business Devpt (on 15 wks)
- Grow & Harvest (1-2 wks)

**Bus. Dev. Experience**  
A 6 months period to assess the innovation potential of the research results (\*)  
Leading to a I&E thesis

3 years PhD

6 months 'Post-Doc'


**International Mobility**  
(minimum of 6 months)

PhD defense

EIT Certificate

(\*) at the EIT ICT Labs Colocation Centre in Rennes, at an industrial partner, or in an incubator.




Doctoral School and DTC presentation | Page 10

 **Are you eligible**


- You are eligible to the **Doctoral training Center (DTC)**, if your research topic has to do with...  
... **'User Centric Networking'**

... **A flagship doctoral training structure** supported by industrial partners (**FT/Orange, Thales, Schneider**)




... Regrouping doctorates working on industry-focused scientific challenges around a common theme



Doctoral School and DTC presentation | Page 10

 **Doctoral Training Center**  
**'User Centric Networking'**

1. **Data Centric Networking**  
Easy and efficient access to data, High level of trust, privacy and control, Better better mobility support.
2. **Distributed and ubiquitous computing**  
Rich personal digital environments, Vast sources of information from which innovative applications are emerging
3. **Security and Privacy**  
Enforce usage control of outsourced data by its owner, as if it were stored locally
4. **Infrastructures: Heterogeneity and Efficiency**  
Develop energy efficient transmission methods, Study the algorithmic foundations of the general context of autonomous computing and communication systems
5. **Energy Efficiency**  
Develop overall strategies to search for the best compromise between : computing power/transmission quality/network lifetime



Doctoral School and DTC presentation | Page 12



## Doctoral School in ICT Innovation Benefits to the PhD students

- Secures a **6 months – funded – post-doc**, working on the innovation potential of your research
- Offers **6 months stay(s) in a foreign laboratory**, summer and winter schools, connecting you to Europe and major EIT ICT Labs partners (labs, industrial groups, academia)
- Transforms you in an open-minded business-aware researcher, with hands-on skills in Innovation and Entrepreneurship
- Grants a Certificate in ICT Innovation from the prestigious European Institute of Innovation and Technology (EIT)
- Taken into account as 'professionnalization courses'



Doctoral School and DTC presentation | Page 13



## Doctoral School in ICT Innovation Benefits to the Labs and partners

- Get more out of your research
  - **6 months – funded** – to assess the innovation potential of the research
  - **6 months international mobility** (at EIT ICT Lab Nodes or other places), expenses funded by EIT ICT Labs
  - Overall, DTC funds around **50Keuros** per PhD student of mobility, I&E education, post-doc salaries, etc.
- No overhead, low burden, flexible
  - No specific IP requirements
  - Open to new PhD students but also to PhD students in 1st year
  - Current PhD contracts terms & conditions kept unchanged



Doctoral School and DTC presentation | Page 14



## How to apply?

- Application by the Doctoral candidate himself
- Doctoral candidate must be already enrolled in a KIC HEI Party
- A selection of the admissible applications is made based on following selection criteria:
  - Entrepreneurial potential
  - Linkage to EIT ICT Labs thematic areas
  - Availability of resources
- This selection is proposed to the EIT ICT Labs Management Committee for decision



Doctoral School and DTC presentation | Page 15




## Application documents

- A Curriculum Vitae including details on the doctoral candidate's academic and professional career
- A certified copy of passport or other kind of identification in English
- A letter of motivation
- A letter of endorsement from the doctoral candidate's advisor. This letter should (1) explicitly allow the doctoral candidate to enter the EIT ICT Labs Doctoral School on ICT Innovation, it should (2) ensure the existence of proper funding, it should (3) assess the doctoral candidate's proficiency in English, it should (4) assess that the advisor will organize the requirement of 'six months of geographical mobility' during the PhD duration
- A copy of the student card of the doctoral candidate proving enrollment in a doctoral school
- Letters of recommendation from professors of the most recent attended HEI or from recent employers




Doctoral School and DTC presentation | Page 16





## And now?

- **5 to 10 positions** available for Sophia Antipolis
- Next selection round in **1st semester of 2015**
- **Talk to your supervisors!**



Doctoral School and DTC presentation | Page 17



## More information? Contacts?

|                 |   |                    |
|-----------------|---|--------------------|
| Doctoral School | <a href="http://doctoralschool.eitictlabs.eu/">http://doctoralschool.eitictlabs.eu/</a> |                    |
| EIT ICT Labs    | <a href="http://www.eitictlabs.eu">www.eitictlabs.eu</a>                                |                    |
| Michel Riveill  | <a href="mailto:riveill@unice.fr">riveill@unice.fr</a>                                  | Responsable<br>DTC |
| Bruno le Dantec | <a href="mailto:bruno.le_dantec@eitictlabs.eu">bruno.le_dantec@eitictlabs.eu</a>        | Responsable<br>CLC |



Doctoral School and DTC presentation | Page 18

